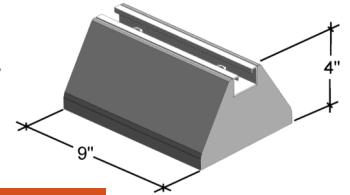


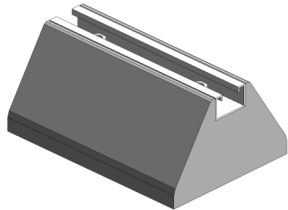
EcoFoot is designed for a wide variety of rooftop applications and with its large footprint provides for greater stability and load bearing. The product design allows for mounting with strut channel, threaded rod, or square tubing. Made of HDPE (High Density Poly Ethylene), each foot comes with a rubber base mat for vibration absorption and roof

surface protection. EcoFoot is ideal for supporting rooftop HVAC equipment, heavy chiller equipment, heavier and larger pipe and duct work, safety stairs / walkways, and can be seismic rated.

EcoBlok, designed for lighter weight applications, can be used on its own or with a standard width 1-5/8" strut channel insert for secure fastening of pipe, tube, and conduit. EcoBlok is made from recycled UV stabilized tire rubber, max loading is 500 lbs., and carries a 10 year warranty as does EcoFoot. Please visit our website for more detailed engineering specifications on the EcoBlok and EcoFoot. All items ship unassembled.

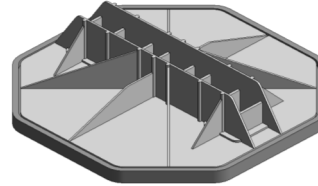


Hardware Hot Dipped Galvanized—Strut Channel Pre-Galv.

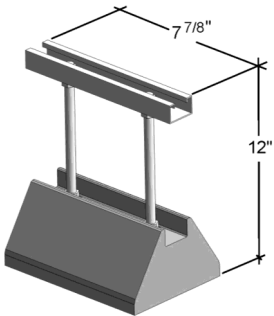


Part # EB8S
EcoBlok c/w strut channel mounting insert

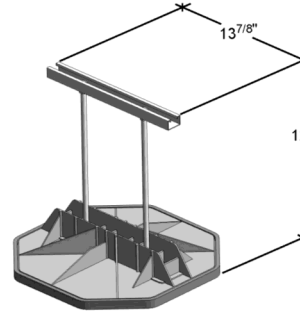
Part # EB8—EcoBlok only



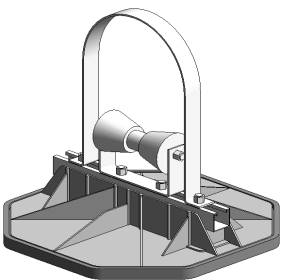
Part # EFB
EcoFoot c/w rubber base mat



Part # EB8TR
EcoBlok Trapeze, height adjustable



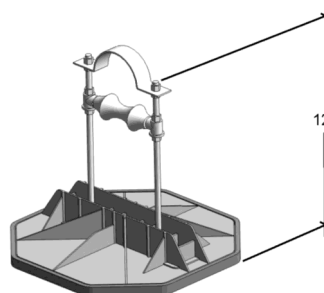
Part # EFTR
EcoFoot Trapeze, height adjustable



Part # EF94SHD
EcoFoot Roller Support c/w custom hold down strap

For pipe 2" – 8" IPS

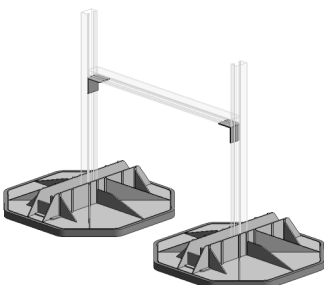
(Part# EF94S – no hold down strap)



Part # EF95SHD
EcoFoot Roller Trapeze, height adjustable, c/w hold down strap

Max pipe 5" IPS

(Part# EF95S – no hold down strap)



Part # QF175
EcoFoot Quick Frame Kit "build your own frame"
incl: (2) EFB, (2) strut corner fittings and hardware: Strut channel not included

Design and Engineering solutions for any application, contact us!